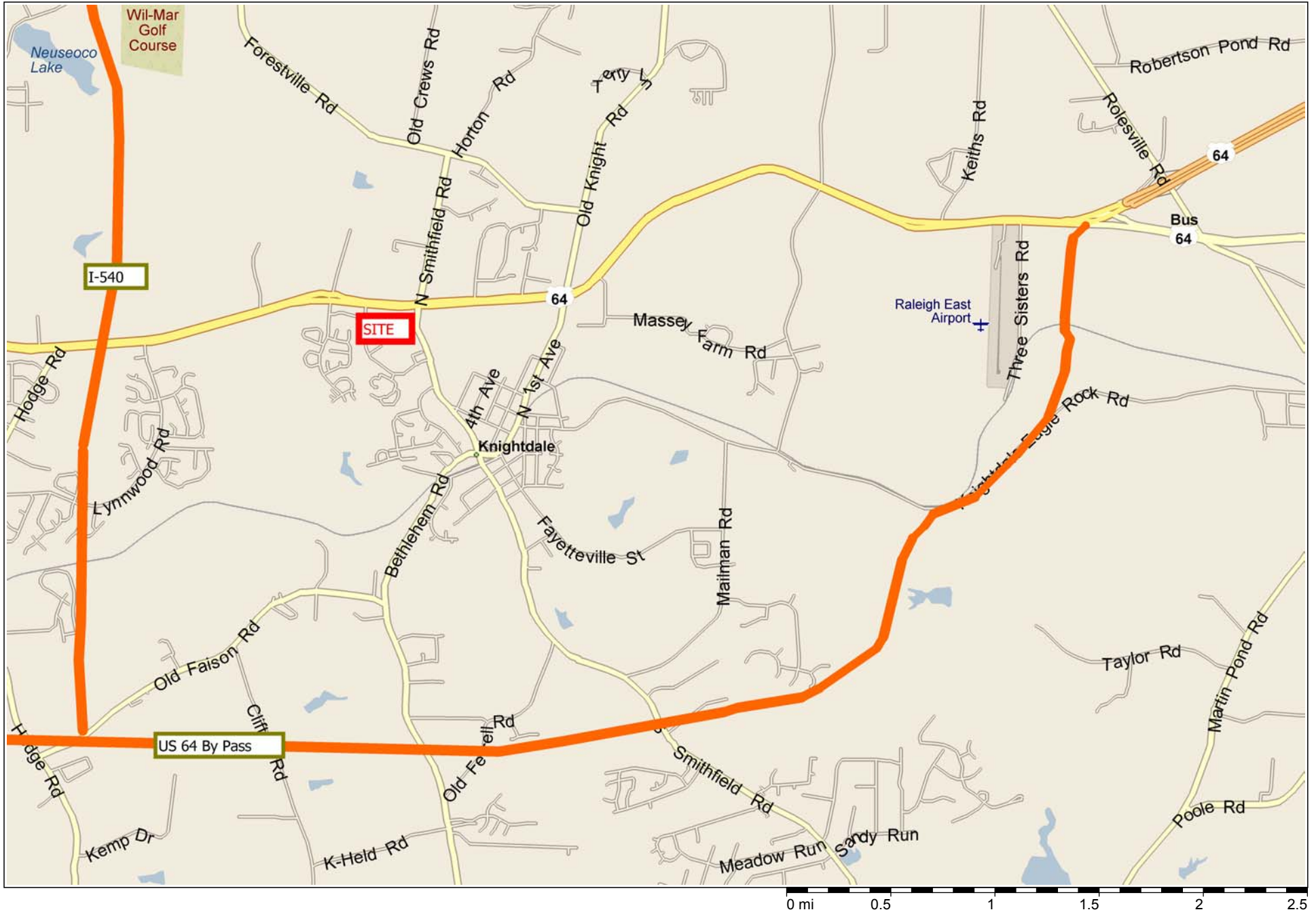


Knightsdale, NC, with I 540 and 64 Bypass



Copyright © 1988-2003 Microsoft Corp. and/or its suppliers. All rights reserved. <http://www.microsoft.com/mappoint>
© Copyright 2002 by Geographic Data Technology, Inc. All rights reserved. © 2002 Navigation Technologies. All rights reserved. This data includes information taken with permission from Canadian authorities © 1991-2002 Government of Canada (Statistics Canada and/or Geomatics Canada), all rights reserved.